



Desktop Printers

DT4L

Linerless label printer for productivity and Eco-friendliness

Simple, compact and reliable direct thermal printer. Equipped with special designed cutter module to fulfill "Print-Cut-Apply" function. Great for printing retail, shipping labels and postal services.



Built-in heavy duty linerless cutter with label present sensor to provide productivity and efficiency for field applications



Standard with Ethernet, Serial and USB ports



Flip to switch label rod to fit 1.5" and 1" core



Free GoLabel label design software for ease of use and maximizing barcode printing efficiency



Specification

DT4L

Desktop Printer

		DT4L
Print Method		Direct Thermal
Resolution		203 dpi (8 dots/mm)
Print Speed		6 IPS (102 mm/s)
Print Width		4.25" (108 mm)
Print Length		Min. 1.77" (45 mm) ; Max. 68" (1727 mm)
Processor		32 Bit RISC CPU
Memory	Flash	8MB Flash (4MB for user storage);
	SDRAM	16MB
Sensor Type		Adjustable reflective sensor. Fixed transmissive sensor, central aligned
Media	Types	Continuous linerless label
	Width	1" (25.4 mm) Min. - 4.60" (117 mm) Max.
	Thickness	0.003" (0.08 mm) Min. - 0.004" (0.10 mm) Max.
	Label Roll Diameter	Max. 5" (127 mm)
	Core Diameter	1", 1.5" (25.4 mm, 38.1 mm)
Printer Language		EZPL, GEPL, GZPL, GDPL auto switch
Software	Label Design Software	GoLabel (for EZPL only)
	Driver	Vista, Windows 7, Windows 8 & 8.1, Windows 10, Windows Server 2008 R2, 2012, 2012 R2, 2016, 2019, MAC, Linux
	SDK	Win CE, .NET, Windows Vista, Windows 7, Windows 8 & 8.1, Windows 10, Android, Mac, iOS
Resident Fonts	Bitmap Fonts	6, 8, 10, 12, 14, 18, 24, 30, 16X26 and OCR A & B Bitmap fonts 0°, 90°, 180°, 270° rotatable, single characters 0°, 90°, 180°, 270° rotatable Bitmap fonts 8 times expandable in horizontal and vertical directions
	TTF Fonts	TTF Fonts (Bold / Italic / Underline). 0°,90°, 180°, 270° rotatable
Download Fonts	Bitmap Fonts	0°, 90°, 180°, 270° rotatable, single characters 0°, 90°, 180°, 270° rotatable
	Asian Fonts	16x16, 24x24. Traditional Chinese (BIG-5), Simplified Chinese(GB2312), Japanese(S-JIS), Korean (KS-X1001) 0°, 90°, 180°, 270° rotatable and 8 times expandable in horizontal and vertical directions
	TTF Fonts	TTF Fonts (Bold / Italic / Underline). 0°,90°, 180°, 270° rotatable
Barcodes	1-D Bar Codes	China Postal Code, Codabar, Code 11, Code 32, Code 39, Code 93, Code 128 (subset A, B, C), EAN-8/EAN-13 (with 2 & 5 digits extension), EAN 128, FIM, German Post Code, GS1 DataBar, HIBC, Industrial 2 of 5, Interleaved 2-of-5 (1 2 of 5), Interleaved 2-of-5 with Shipping Bearer Bars, ISBT-128, ITF 14, Japanese Postnet, Logmars, MSI, Postnet, Plessey, Planet 11 & 13 digit, RPS 128, Standard 2 of 5, Telepen, Matrix 2 of 5, UPC-A/UPC-E (with 2 or 5 digit extension), UCC/EAN-128 K-Mart and Random Weight
	2-D Bar Codes	Aztec code, Code 49, Codablock F, Datamatrix code, MaxiCode, Micro PDF417, Micro QR code, PDF417, QR code, TLC 39, GS1 Composite
Code Pages		Codepage 437, 737,850, 851, 852, 855, 857, 860, 861, 862, 863, 865, 866, 869 Windows 1250, 1251, 1252, 1253, 1254, 1255, 1257 Unicode UTF8 · UTF16BE · UTF16LE
Graphics		Resident graphic file types are BMP and PCX, other graphic formats are downloadable from the software
Interfaces		USB Device (B-Type) Serial port: RS-232 (DB-9) IEEE 802.3 10/100Base-Tx Ethernet port (RJ-45)
RTC		Standard
Control Panel		One Tri-color LED: Power (Green, Orange and Red) Control key: FEED
Power		Auto Switching 100-240VAC, 50-60Hz
Environment	Operation Temperature	41°F to 104°F (5°C to 40°C)
	Storage Temperature	-4°F to 122°F (-20°C to 50°C)
Humidity	Operation	30-85%, non-condensing.
	Storage	10-90%, non-condensing.
Agency Approvals		CE(EMC), FCC Class A, CB, cUL, CCC
Dimension	Length	11.89" (302 mm)
	Height	6.53" (166 mm)
	Width	6.61" (168 mm)
Weight		4.85 lbs (2.2Kg) ,excluding consumables
Accessory		Built-in Standard : Linerless Cutter Module with Label Present Sensor

* Specifications are subject to change without notice. All company and/or product names are trademarks and/or registered trademarks of their respective owners.

** Minimum print height and maximum print speed specification compliance can be dependent on non-standard material variables such as label type, thickness, spacing, liner construction, etc. Godex is pleased to test non-standard materials for minimum print height and maximum print speed capability.

Applications

Applications for Labels & Barcodes

DT4L are the ultimate tool for barcode printings in any industry.



Warehouses, Logistic

Shelf labels, product serial number labels, inventory management, shipping labels, pallet labels, carton labels, etc.

Transportation

Case pack labels, address labels, product serial number labels, inventory management, shipping labels, or related industrial applications.

Retail

Content labels, courier tracking label, postage labels, etc.

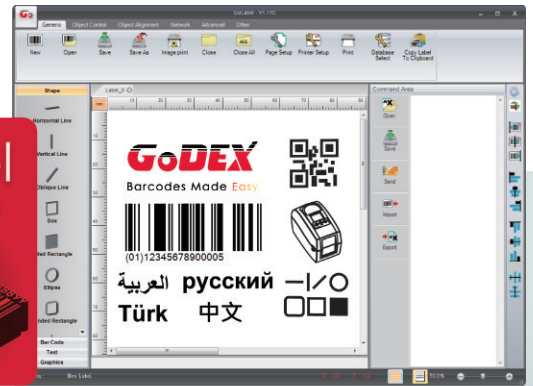
GoDEX

LABEL DESIGN SOFTWARE

GoLabel Software / User Friendly

GoLabel is based on a WYSIWYG (what you see is what you get) user interface, makes everything so easy for you to create and print barcode labels. GoLabel is the first-choice label design software that you can't miss it!

Go visit www.godexintl.com and download GoLabel to experience it!



GoDEX

RIBBONS

High quality original GoDEX thermal transfer ribbons

GoDEX offers premium thermal transfer ribbons that will fit most of your printing applications.

- Wax
- Wax/ Resin
- Resin
- Near Edge

