



Desktop Printers

# GE300 / GE330

## Economical 4" Thermal Transfer Desktop Printer

Use the GE300 for all your light to medium duty thermal transfer barcode printing applications



Ethernet, Serial and USB ports included



Uses standard low-cost labels and ribbons



High cost-effectiveness for large amount printing



Free labeling software GoLabel for easy printing



# GE300 / GE330 Printer Specification

Model	GE300	GE330
Print Method	Thermal Transfer / Direct Thermal	
Resolution	203 dpi (8 dots/mm)	300 dpi (12 dots/mm)
Print Speed	5 IPS (127 mm/s)**	4 IPS (102 mm/s)**
Print Width	4.25" (108 mm)	4.16" (105.7 mm)
Print Length	Min. 0.16" (4 mm)** Max. 68" (1727 mm)	Min. 0.16" (4 mm)** Max. 30" (762 mm)
Processor	32 Bit RISC CPU	
Memory	8MB Flash (4MB for user storage) ; 16MB SDRAM	
Sensor Type	Adjustable reflective sensor (full range). Fixed transmissive sensor	
Media	Types : Continuous form, gap labels, black mark sensing, and punched hole; label length set by auto sensing or programming Width : 1" (25.4 mm) Min. - 4.64" (118 mm) Max. Thickness : Min. 0.003" (0.076 mm) – Max. 0.008" (0.20 mm) Label Roll Diameter : Max. 5" (127 mm) Core Diameter : 1" (25.4 mm), 1.5" (38.1 mm)	
Ribbon	Types : Wax, wax / resin Length : 360' (110 m) Width : 1.18" Min. - 4.33" (30 mm - 110 mm) Max. Ribbon Roll Diameter : 1.57" (40 mm) Core Diameter : 0.5" (12.7 mm)	
Printer Language	EZPL, GEPL, GZPL, GDPL auto switch	
Software	Label design software: GoLabel (for EZPL only) Driver: Vista, Windows 7, Windows 8 & 8.1, Windows 10, Windows Server 2008 R2, 2012, 2012 R2, 2016, 2019, MAC, Linux SDK: Win CE, .NET, Windows Vista, Windows 7, Windows 8 & 8.1, Windows 10, Android, Mac, iOS	
Resident Fonts	Bitmap fonts: 6, 8, 10, 12, 14, 18, 24, 30, 16X26 and OCR A & B Bitmap fonts 0°, 90°, 180°, 270° rotatable, single characters 0°, 90°, 180°, 270° rotatable Bitmap fonts 8 times expandable in horizontal and vertical directions TTF Fonts: TTF Fonts (Bold / Italic / Underline ). 0°,90°, 180°, 270° rotatable	
Download Fonts	Bitmap fonts: 0°, 90°, 180°, 270° rotatable, single characters 0°, 90°, 180°, 270° rotatable Asian fonts: 16x16, 24x24. Traditional Chinese (BIG-5), Simplified Chinese(GB2312), Japanese(S-JIS), Korean (KS-X1001) 0°, 90°, 180°, 270° rotatable and 8 times expandable in horizontal and vertical directions TTF fonts: TTF Fonts (Bold / Italic / Underline ). 0°,90°, 180°, 270° rotatable	
Barcodes	1-D Bar codes: China Postal Code, Codabar, Code 11, Code 32, Code 39, Code 93, Code 128 (subset A, B, C), EAN-8/EAN-13 (with 2 & 5 digits extension), EAN 128, FIM, German Post Code, GS1 DataBar, HIBC, Industrial 2 of 5 , Interleaved 2-of-5 (1 2 of 5), Interleaved 2-of-5 with Shipping Bearer Bars, ISBT-128, ITF 14, Japanese Postnet, Logmars, MSI, Postnet, Plessey, Planet 11 & 13 digit, RPS 128, Standard 2 of 5, Telepen, Matrix 2 of 5, UPC-A/UPC-E (with 2 or 5 digit extension), UCC/EAN-128 K-Mart and Random Weight 2-D Bar codes: Aztec code, Code 49, Codablock F , Datamatrix code, MaxiCode, Micro PDF417, Micro QR code, PDF417, QR code, TLC 39, GS1 Composite	
Code Pages	Codepage 437, 737, 850, 851, 852, 855, 857, 860, 861, 862, 863, 865, 866, 869 Windows 1250, 1251, 1252, 1253, 1254, 1255, 1257 Unicode UTF8 \ UTF16BE \ UTF16LE	
Graphics	Resident graphic file types are BMP and PCX, other graphic formats are downloadable from the software · USB 2.0	
Interfaces	· Serial port: RS-232 (DB-9) · Ethernet 10/100 Mbps	
RTC	Options	
Control Panel	One Tri-color LED: Power (Green, Orange and Red) Function Key: FEED Calibration Button	
Power	Auto Switching 100-240VAC, 50-60Hz.	
Environment	Operation temperature: 41°F to 104°F (5°C to 40°C) Storage temperature: -4°F to 140°F (-20°C to 60°C)	
Humidity	Operation: 30-85%, non-condensing. Storage: 10-90%, non-condensing.	
Agency Approvals	CE (EMC) \ FCC Class A \ CB \ UL \ cUL \ CCC \ UKCA	
Dimension	Length : 251 mm (9.88") Height : 164 mm (6.46") Width : 200 mm (7.87")	
Weight	1.8 kg, exclusive consumables Cutter (Dealer Install) External label unwind Stand External label rewinder	
Options	BT Wireless LAN (IEEE 802.11 b/g/n) Real Time Clock (RTC) (Dealer Install) Left Alignment Printing Mechanism (Factory Install)	

\*Specifications are subject to change without notice. All company and/or product names are trademarks and/or registered trademarks of their respective owners.

\*\*Minimum print height and maximum print speed specification compliance can be dependent on non-standard material variables such as label type, thickness, spacing, liner construction, etc. GoDEX is pleased to test non-standard materials for minimum print height, and maximum print speed capability.

# Applications

## Applications for Labels & Barcodes

GE300 / GE330 is your best friend for getting the job done instantly.



### Health Care

Tube tags, pharmaceutical Labels  
patient identification, medical  
records, and laboratory specimen  
tags.

### Warehouses, Logistic & Transportation

Stack label, Product label, Postal slip  
Storage management, Dispatch label,  
Packaging label, Delivery receipt, etc.

### Administration

ID cards, document and records  
management, access control  
management, library management  
& organization and classification  
system, ISBN application, etc.

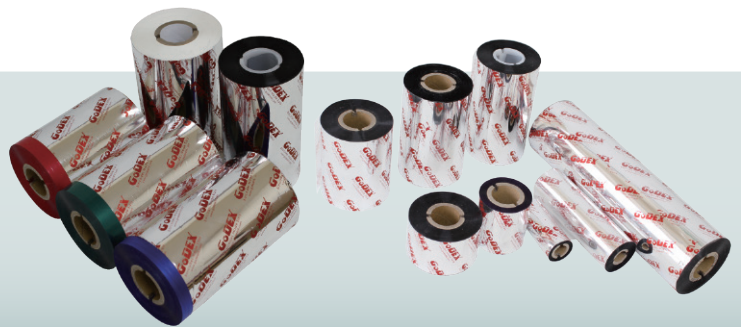
## GoDEX

### RIBBONS

High quality original GoDEX thermal  
transfer ribbons

GoDEX offers premium thermal transfer ribbons  
that will fit most of your printing applications.

- Wax
- Wax/ Resin
- Resin
- Near Edge



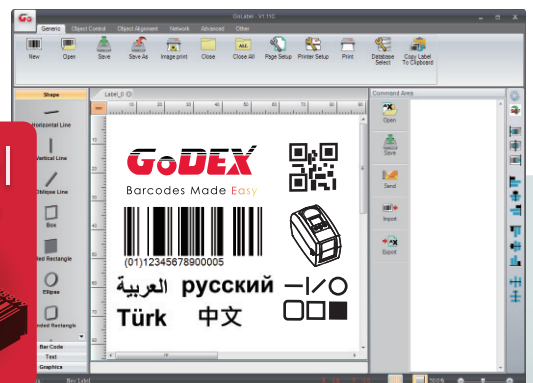
## GoDEX

### LABEL DESIGN SOFTWARE

GoLabel Software /  
User Friendly

GoLabel is based on a WYSIWYG (what you see is  
what you get) user interface, makes everything so  
easy for you to create and print barcode labels.  
GoLabel is the first-choice label design software  
that you can't miss it!

Go visit [www.godexintl.com](http://www.godexintl.com) and download GoLabel  
to experience it!



**GoDEX**  
[www.godexintl.com](http://www.godexintl.com)

Godex International  
( Headquarters )  
Telephone : +886 2 2225 8580  
Contact us : [infoGT@godexintl.com](mailto:infoGT@godexintl.com)

Godex Americas  
Telephone : +1 805 987 5100  
Contact us : [infoGA@godexintl.com](mailto:infoGA@godexintl.com)

Godex China  
Telephone : +86 21 56651313  
Contact us : [infoGC@godexintl.com](mailto:infoGC@godexintl.com)

Godex Europe  
Telephone : +49 2195 59599 0  
Contact us : [infoGE@godexintl.com](mailto:infoGE@godexintl.com)