

# Desktop Printers RT863i



## 600 DPI superior printing quality on desktop printer

RT863i is most compact 600dpi with 300m ribbon desktop printer market. Equipped with leading technologies, RT863i performs the highest class of printing quality on affordable price.



Enlarged touch screen panel for intuitive and easy operation



Multiple interface plus optional WiFi, bluetooth for easy integration



Innovative "C" button makes label Calibration simple and fast



# Preliminary Specifications

## RT863i

### Desktop Printer

| Model                   |                              | RT863i   |
|-------------------------|------------------------------|--|
| <b>Print Method</b>     |                              | Thermal Transfer / Direct Thermal  |
| <b>Resolution</b>       |                              | 600 dpi (24 dots/mm)   |
| <b>Print Speed</b>      |                              | 3 IPS (76.2 mm/s)**  |
| <b>Print Width</b>      |                              | 4.16" (105.6 mm)   |
| <b>Print Length</b>     |                              | Min. 0.16" (4 mm)**; Max. 15" (381 mm)   |
| <b>Processor</b>        |                              | 32 Bit RISC CPU  |
| <b>Memory</b>           | <b>Flash</b>                 | 128 MB Flash   |
|                         | <b>SDRAM</b>                 | (60 MB for user storage)<br>32 MB  |
| <b>Sensor Type</b>      |                              | Adjustable reflective sensor (full range). Fixed transmissive sensor, central aligned  |
|                         | <b>Types</b>                 | Continuous form, gap labels, black mark sensing, and punched hole; label length set by auto sensing or programming   |
|                         | <b>Width</b>                 | Min. 0.79" (20.0 mm) – Max. 4.64" (118 mm)   |
| <b>Media</b>            | <b>Thickness</b>             | Min. 0.003" (0.076 mm) – Max. 0.008" (0.20 mm)   |
|                         | <b>Label Roll Diameter</b>   | Max. 5" (127 mm)   |
|                         | <b>Core Diameter</b>         | 1" (25.4 mm), 1.5" (38.1 mm)   |
|                         | <b>Types</b>                 | Wax, wax / resin, resin  |
|                         | <b>Length</b>                | 984.25' (300 m)  |
| <b>Ribbon</b>           | <b>Width</b>                 | 1.18" Min. - 4.33" (30 mm - 110 mm) Max.   |
|                         | <b>Ribbon Roll Diameter</b>  | 2.67" (68 mm)  |
|                         | <b>Core Diameter</b>         | 1" (25.4 mm)   |
| <b>Printer Language</b> |                              | EZPL, GEPL, GZPL auto switch   |
|                         | <b>Label Design Software</b> | GoLabel (for EZPL only)  |
| <b>Software</b>         | <b>Driver</b>                | Windows 2000, XP, Vista, Windows 7, 8.1 and 10 , Windows Server 2003 & 2008 、 MAC 、 Linux  |
|                         | <b>DLL</b>                   | Win CE, .NET, Andriod, Windows Mobile, Windows 2000 / XP / VISTA / Windows 7 / Windows 8.1/Windows 10  |
| <b>Resident Fonts</b>   | <b>Bitmap Fonts</b>          | Bitmap fonts 90°, 180°, 270° rotatable, single characters 90°, 180°, 270° rotatable<br>Bitmap fonts 8 times expandable in horizontal and vertical directions   |
|                         | <b>TTF Fonts</b>             | TTF Fonts (Bold / Italic / Underline ). 0°, 90°, 180°, 270° rotatable  |
|                         | <b>Asian Fonts</b>           | Bitmap fonts 90°, 180°, 270° rotatable, single characters 90°, 180°, 270° rotatable<br>16x16, 24x24. Traditional Chinese (BIG-5), Simplified Chinese(GB2312), Japanese (S-JIS), Korean (KS-X1001)  |
| <b>Download Fonts</b>   | <b>Asian Fonts</b>           | 90°, 180°, 270° rotatable and 8 times expandable in horizontal and vertical directions   |
|                         | <b>TTF Fonts</b>             | TTF Fonts (Bold / Italic / Underline ). 0°, 90°, 180°, 270° rotatable  |
|                         | <b>1-D Bar codes</b>         | China Postal Code, Codabar, Code 11, Code 32, Code 39, Code 93, Code 128 (subset A, B, C), EAN-8, EAN-13, EAN 8/13 (with 2 & 5 digits extension), EAN 128, FIM, German Post Code, GS1 DataBar, HIBC, Industrial 2 of 5, Interleaved 2-of-5 (I 2 of 5), Interleaved 2- of 5 with Shipping Bearer Bars, ISBT – 128, ITF 14, Japanese Postnet, Logmars, MSI, Postnet, Plessey, Planet 11 & 13 digit, RPS 128, Random Weight, Standard 2 of 5, Telepen, UPC-A, UPC-E, UPC-A and UPC-E with EAN 2 or 5 digit extension, UCC 128, UCC/EAN-128 K-Mart |
|                         | <b>2-D Bar codes</b>         | Aztec code, Code 49, Codablock F , Datamatrix code, MaxiCode, Micro PDF417, Micro QR code, PDF417, QR code, TLC 39   |
| <b>Code Pages</b>       |                              | CODEPAGE 437, 737, 850, 851, 852, 855, 857, 860, 861, 862, 863, 865, 866, 869,<br>WINDOWS 1250, 1251, 1252, 1253, 1254, 1255, 1257<br>Unicode UTF8 、 UTF16BE 、 UTF16LE   |
| <b>Graphics</b>         |                              | Resident graphic file types are BMP and PCX, other graphic formats are downloadable from the software  |
|                         | <b>Interfaces</b>            | Serial port: RS-232 (DB-9)<br>USB Device port (B-Type)<br>IEEE 802.3 10/100 Base-Tx Ethernet port (RJ-45)<br>USB Host (A-Type)<br>Parallel Port (Mini-Centronics)  |
| <b>Control Panel</b>    |                              | Backlight 3.2" Touch Screen LCD<br>Calibration button<br>Control Key : FEED<br>Power on/standby button   |
| <b>Power</b>            |                              | Switching power 100-240VAC, 50-60Hz input  |
| <b>Environment</b>      | <b>Operation Temperature</b> | 41°F to 104°F (5°C to 40°C)  |
|                         | <b>Storage Temperature</b>   | -4°F to 140°F (-20°C to 60°C)  |
|                         | <b>Humidity</b>              | 25-85%, non-condensing.  |
|                         | <b>Storage</b>               | 10-90%, non-condensing.  |
| <b>Agency Approvals</b> |                              | CE (EMC) 、 FCC Class A 、 CB 、 UL 、 cUL   |
|                         | <b>Length</b>                | 11.0" (280 mm)   |
| <b>Dimension</b>        | <b>Height</b>                | 7.7" (195 mm)  |
|                         | <b>Width</b>                 | 8.3" (210 mm)  |
| <b>Weight</b>           |                              | 5.9 lbs (2.7 Kg) ,excluding consumables  |
| <b>Options</b>          |                              | Label dispenser<br>Cutter<br>External label unwind Stand<br>External label rewinder<br>Bluetooth<br>Wireless LAN (IEEE 802.11 b/g/n)<br>Real Time Clock (RTC)  |

\*Specifications are subject to change without notice. All company and/or product names are trademarks and/or registered trademarks of their respective owners.

\*\*Minimum print height and maximum print speed specification compliance can be dependent on non-standard material variables such as label type, thickness, spacing, liner construction, etc. GoDEX is pleased to test non-standard materials for minimum print height, and maximum print speed capability.

# Applications

## Applications for Labels & Barcodes

**RT863i** are the ultimate tool for barcode printings in any industry.



### Cosmetics

Shelf labels, product serial number labels, ingredients contents labels.



### Health Care

Tube tags, pharmaceutical labels, patient identification, medical records and laboratory specimen tags.



### Retail

Price tags, content labels, jewelry labels, courier tracking label, receipts for registered mails, bills of landing (B / L), postage labels, etc.

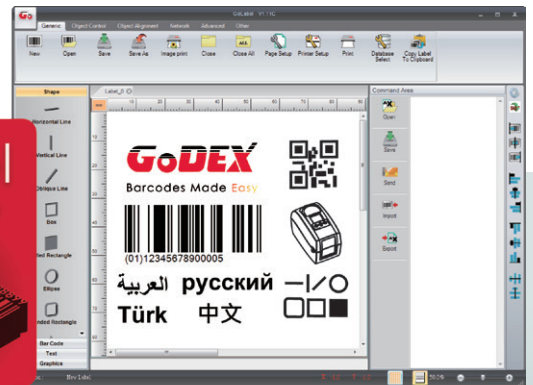
## GoDEX

### LABEL DESIGN SOFTWARE

GoLabel Software / User Friendly

GoLabel is based on a WYSIWYG (what you see is what you get) user interface, makes everything so easy for you to create and print barcode labels. GoLabel is the first-choice label design software that you can't miss it!

Go visit [www.godexintl.com](http://www.godexintl.com) and download GoLabel to experience it!



## GoDEX

### RIBBONS

High quality original GoDEX thermal transfer ribbons

GoDEX offers premium thermal transfer ribbons that will fit most of your printing applications.

- Wax
- Wax/ Resin
- Resin
- Near Edge

