



T-10/T-20 LABEL REWINDER
USER GUIDE

DOCUMENT DESCRIPTION

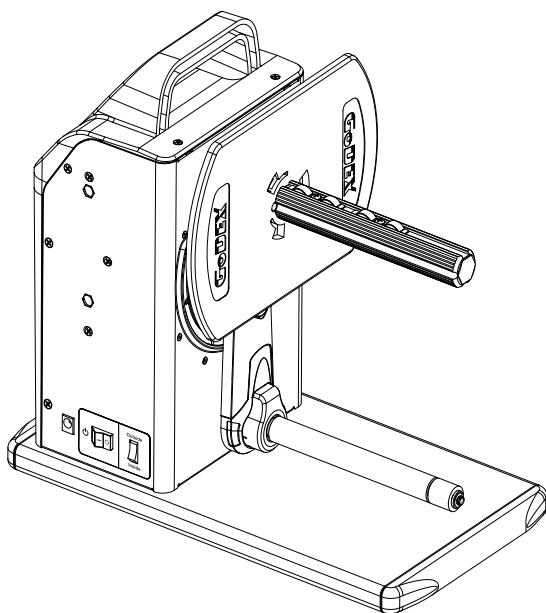
T-10/T-20 Label Rewinder
Version :Rev. B
Issue Date :2018.09.18
Part NO. :313-041000-403

CONTENTS

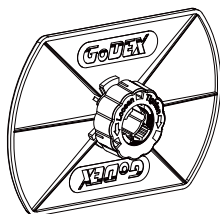
- 1 Box Contents**
- 2 Getting to Know Your T-10/T-20 Rewinder**
 - Device Overview
- 3 Setting Up the Rewinder**
 - Connection
 - Loading the Label
 - Install the Plate
 - Remove the Plate
 - Label Core in Different Sizes
 - Match Up the Empty Label Core and Core Adapter
 - The Modes of Rewinding
- 4 What's the Status of the Rewinder**
 - LED Indicator
 - When the Rewinder is Full
- 5 Troubleshooting**
 - Sensing Error
 - Idle Load
- VR(Speed Adjustment)**
- Appendix**
 - Product Specifications

1 BOX CONTENTS

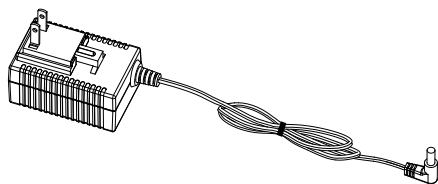
- T-10/T-20 Label Rewinder



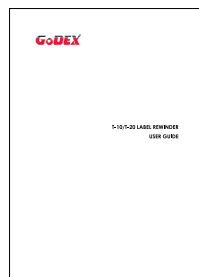
- Paper Stop Plate



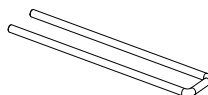
- Power Adapter



- User Guide

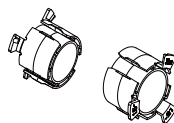


- Paper Clip

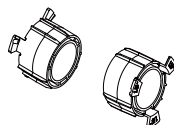


- 1.5" Adapter

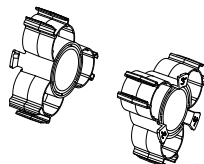
38 mm



40 mm



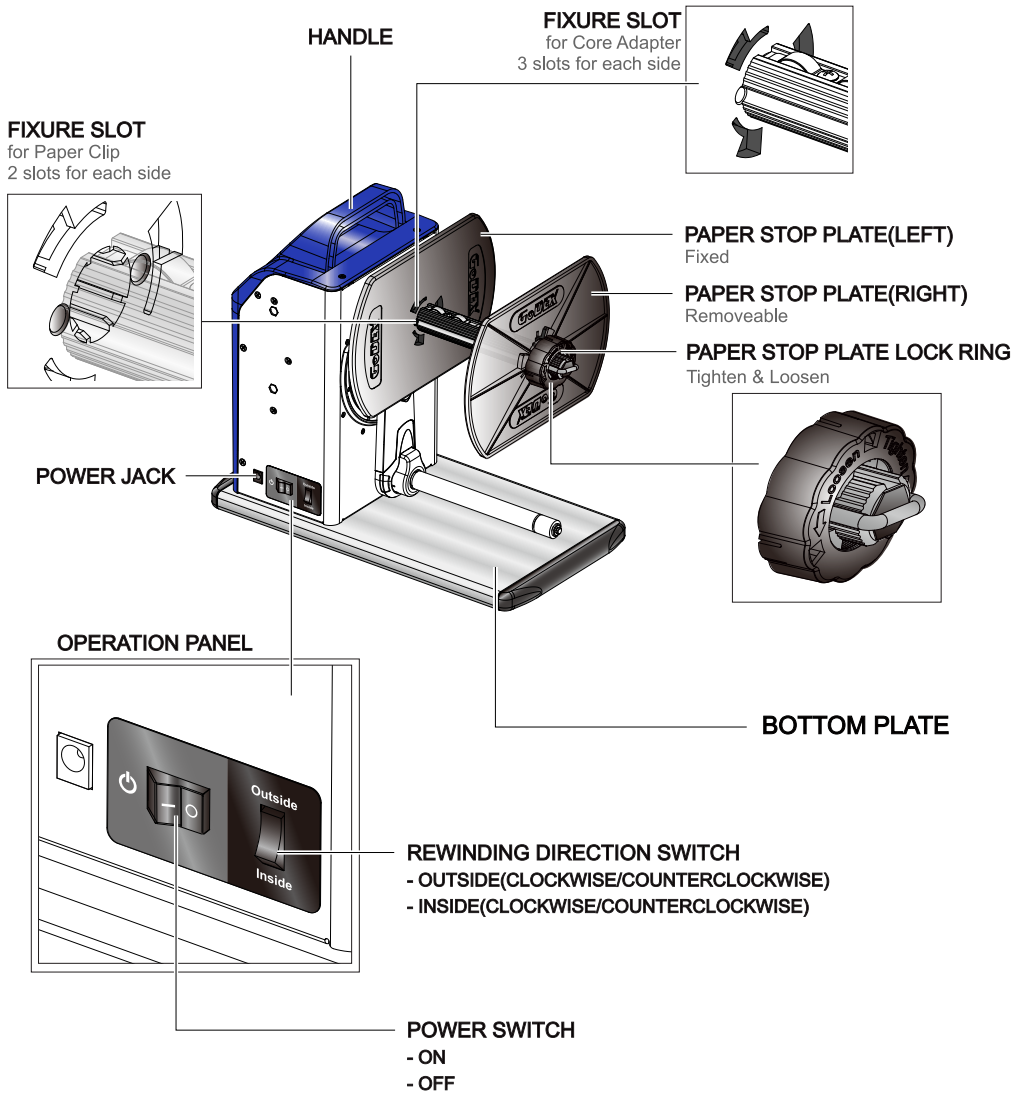
- 3" Adapter



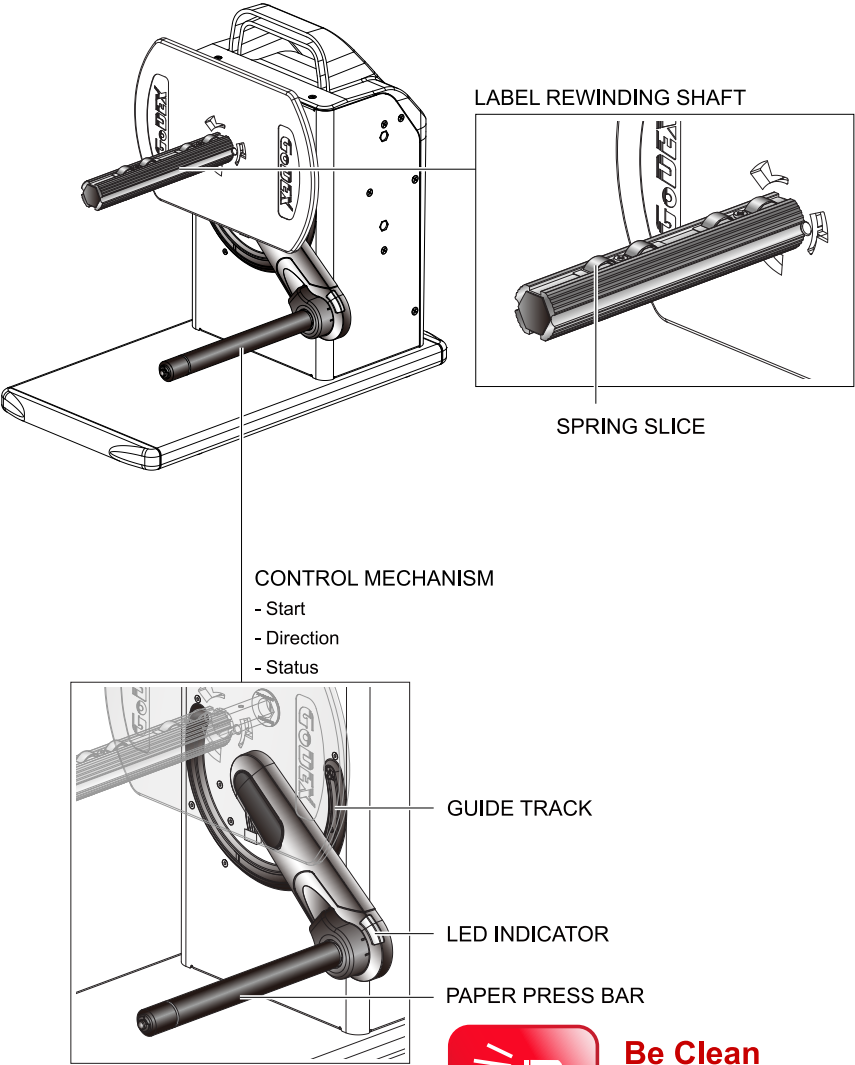
2 GETTING TO KNOW YOUR T-10/T-20 REWINDER

Device Overview

- Front View



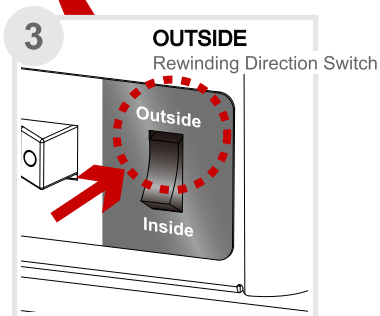
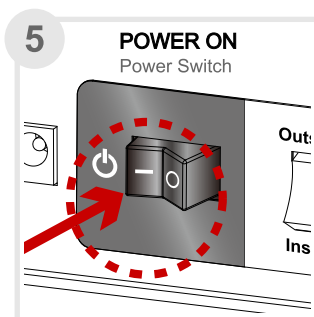
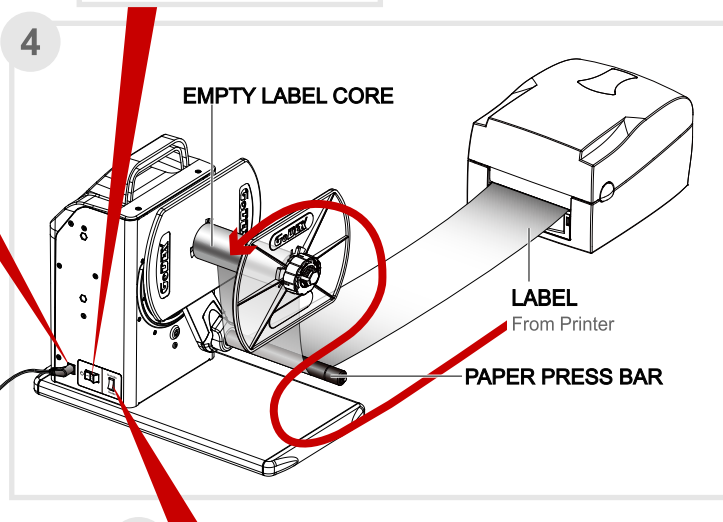
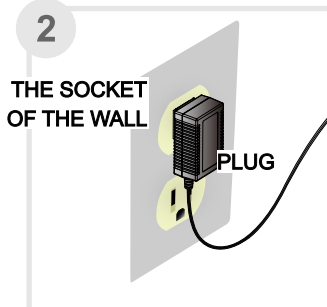
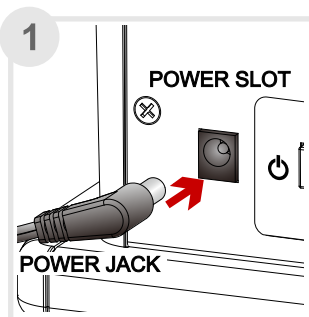
• Rear View



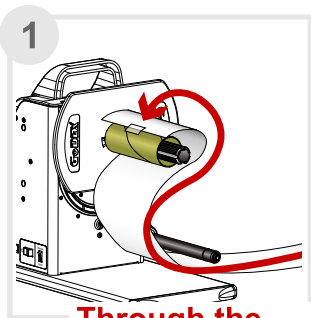
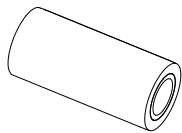
Be Clean

3 SETTING UP THE REWINDER

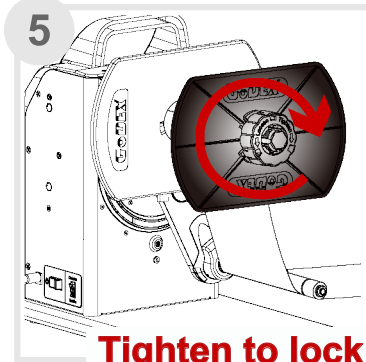
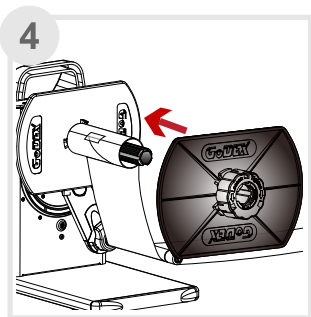
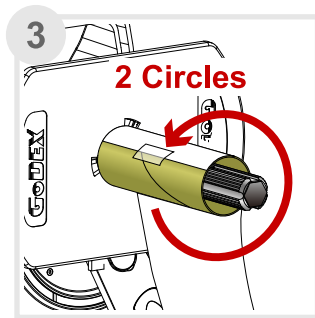
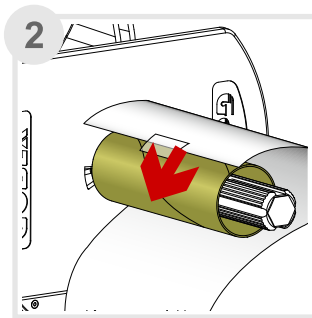
Connection



Loading the Label Label Stock



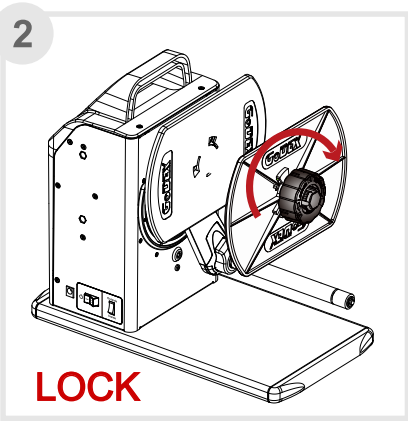
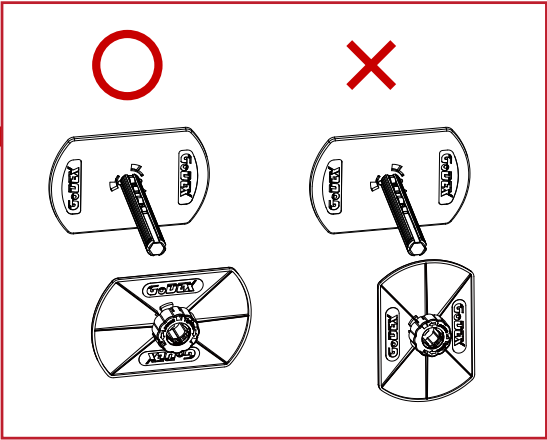
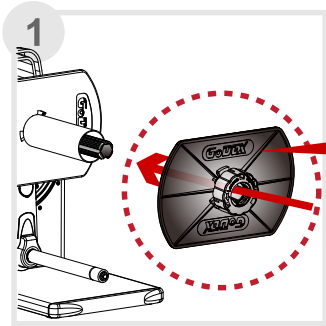
**Through the
paper press bar**



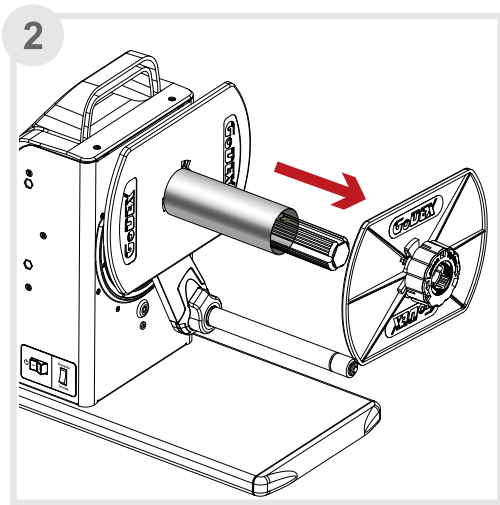
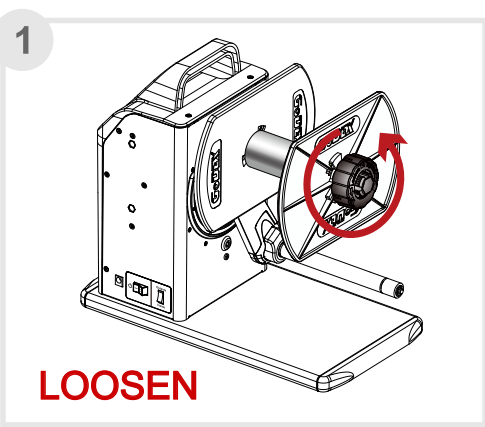
Tighten to lock

Install and Remove the Plate

Install



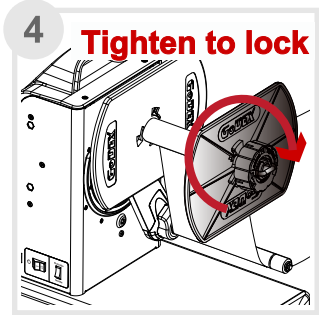
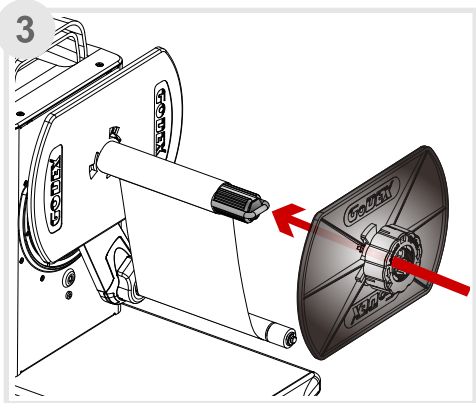
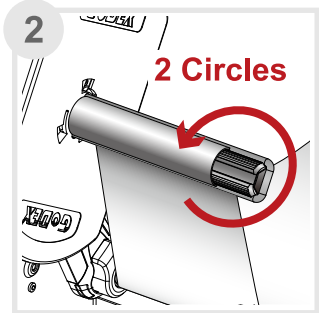
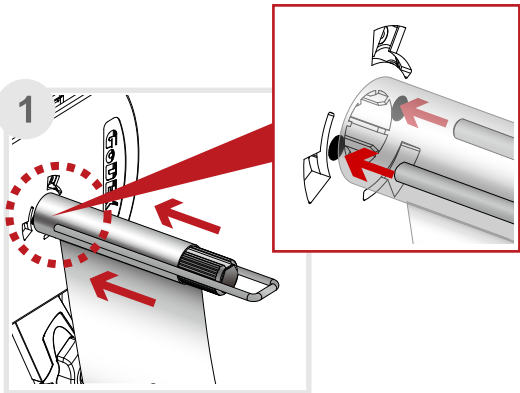
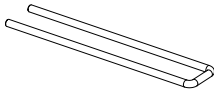
Remove



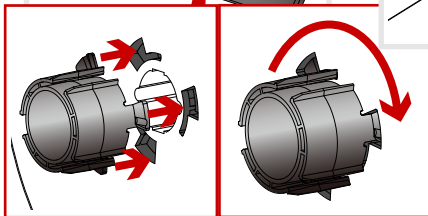
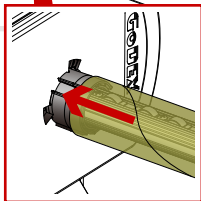
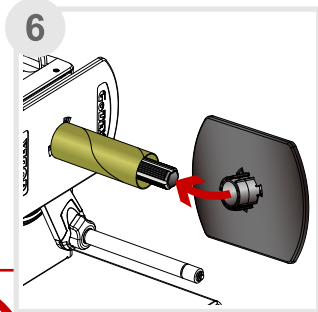
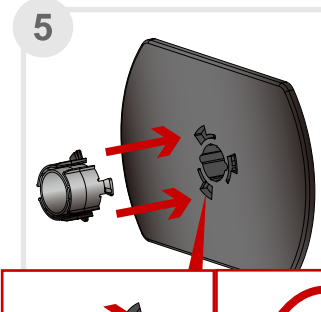
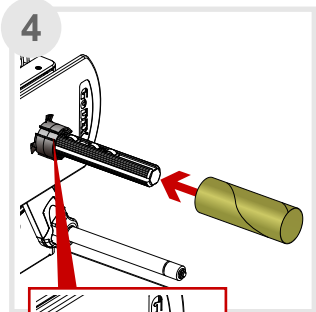
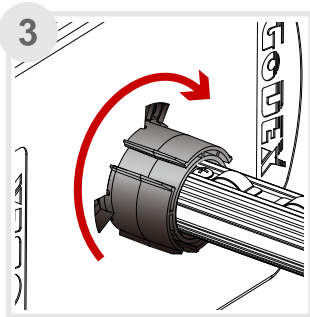
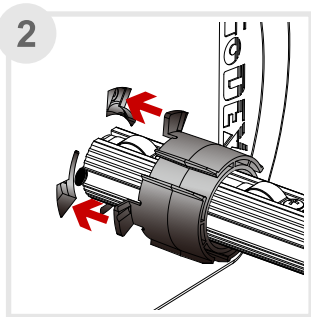
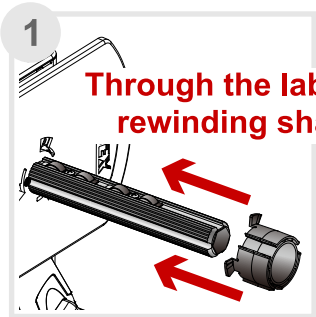
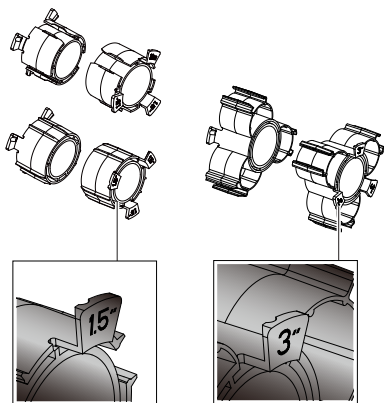
Label core in different sizes

Paper Clip

for 1", to fix label in position.

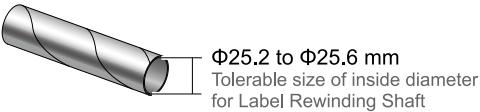
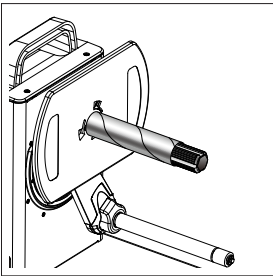


Core Adapter
for 1.5" and 3" Empty label core.

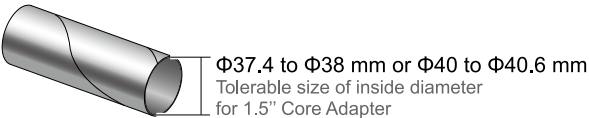
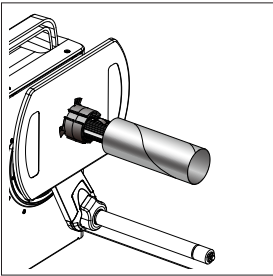


Match up the empty label core and core adapter

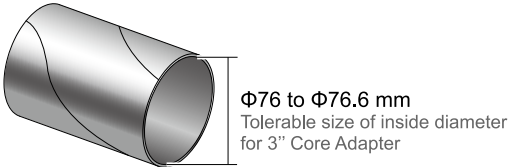
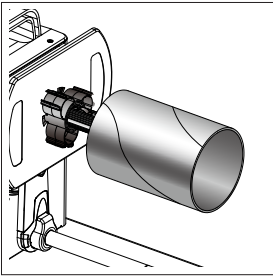
1'' Empty Label Core
with Label rewinding shaft.



1.5'' Empty Label Core
with 1.5'' Core adapter.

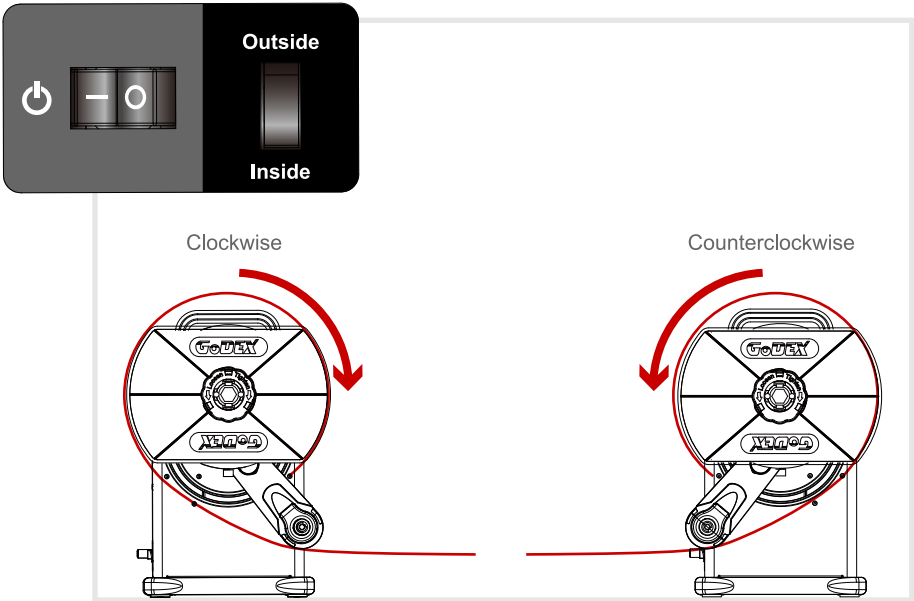
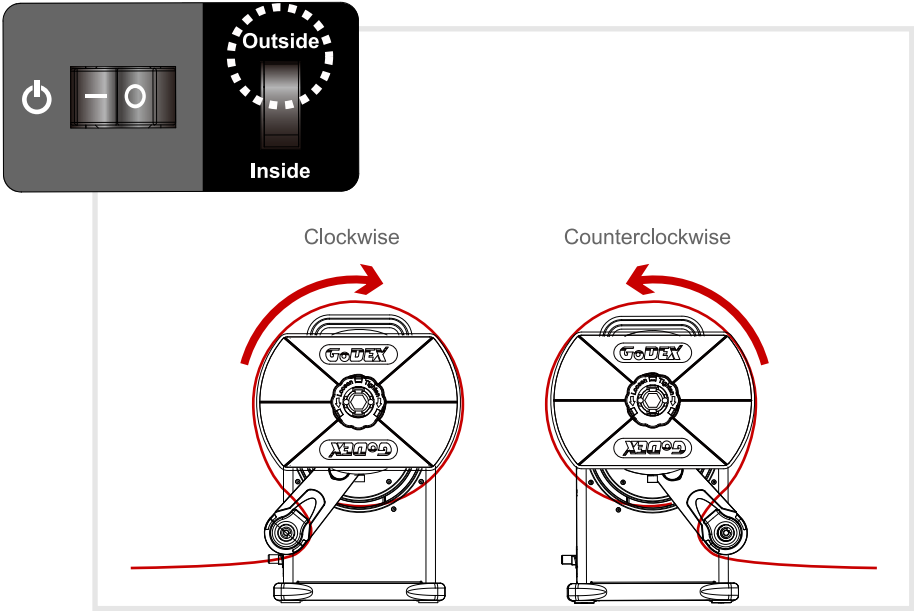


3'' Empty Label Core
with 3'' Core adapter.

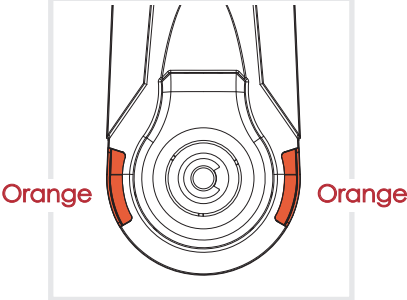
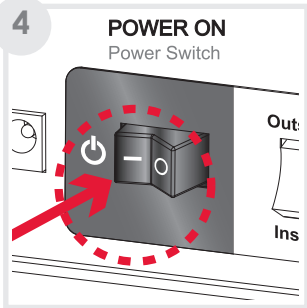
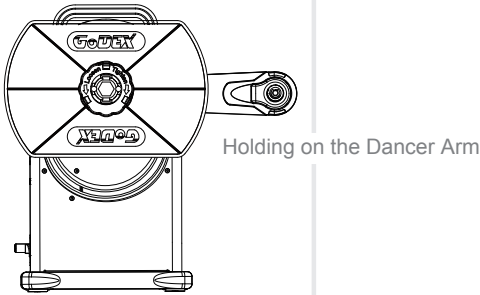
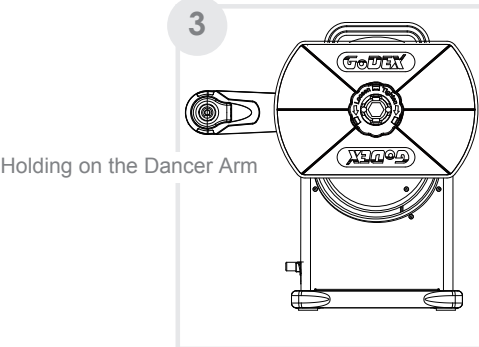
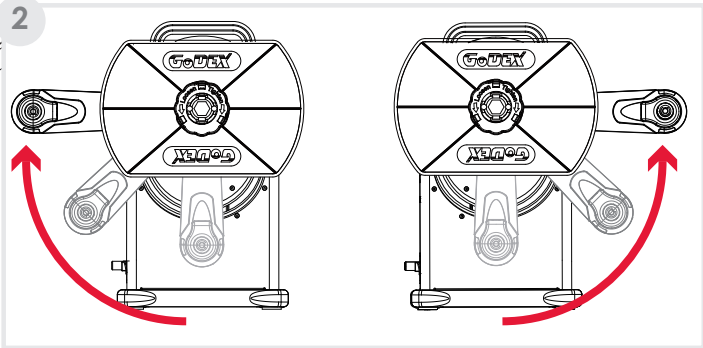
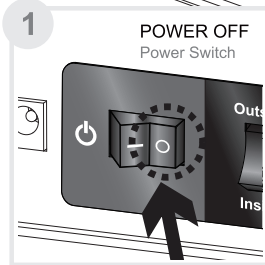
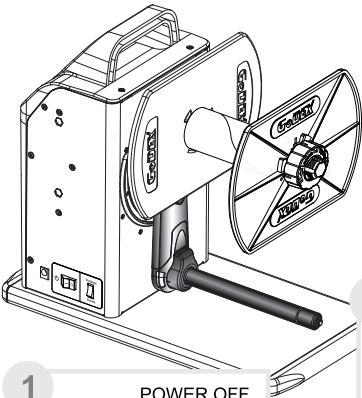


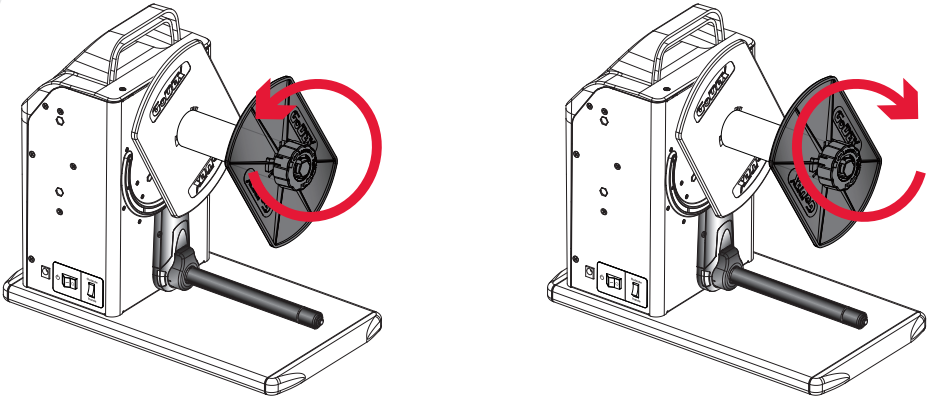
The Modes of Rewinding

Outside



Motor Fixed Speed Mode

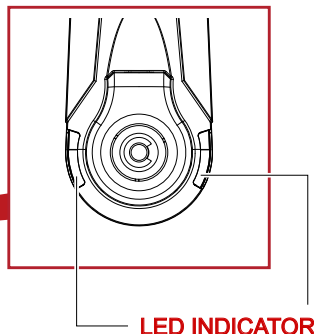
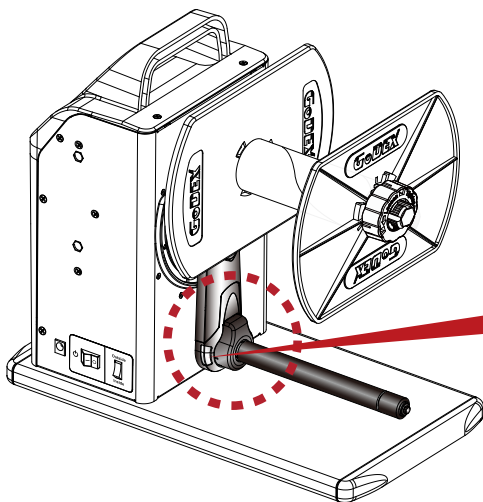


**To Set up:**

1. Make sure the power is switched off.
2. Place the Dancer Arm at its highest point on either side of the retractor.
3. Turn on the power while holding on the Dancer Arm.
Once the power is on, an orange light should light up and that will bring the retractor into the "Motor Fixed Speed Mode."
4. Release the Dancer Arm and the retractor will be rewinding at a fix speed.
5. To stop, switch off the power.

4 WHAT'S THE STATUS OF THE REWINDER

LED Indicator

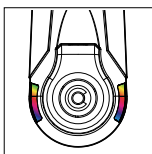


LED INDICATOR

STATUS

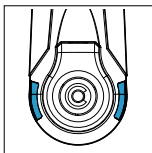
LED INDICATOR

Power ON



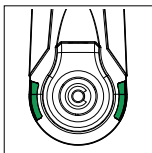
Flash

Outside



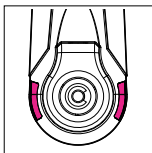
Blue

Inside



Green

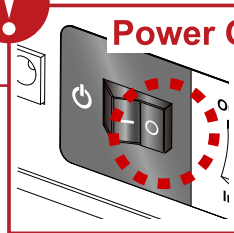
Error / Alert



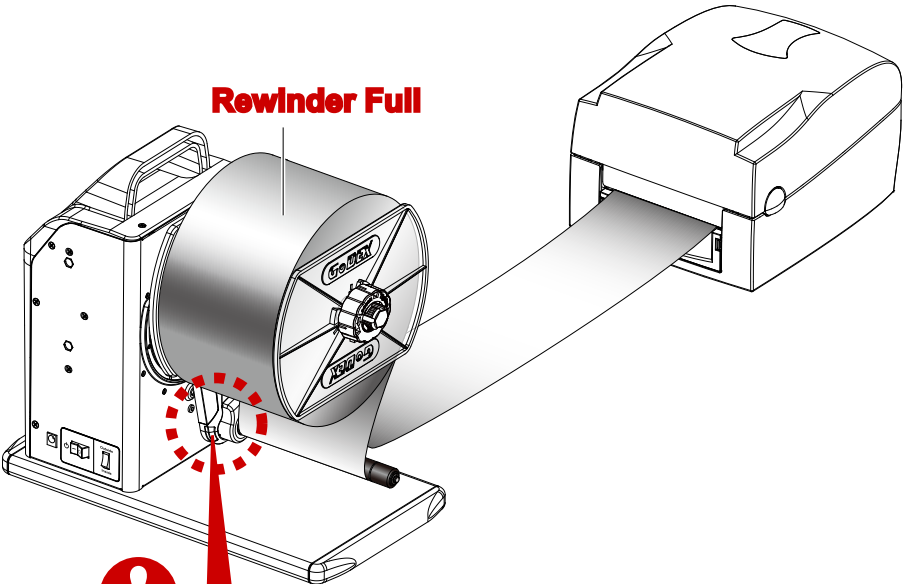
Pink



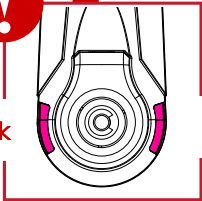
Power OFF



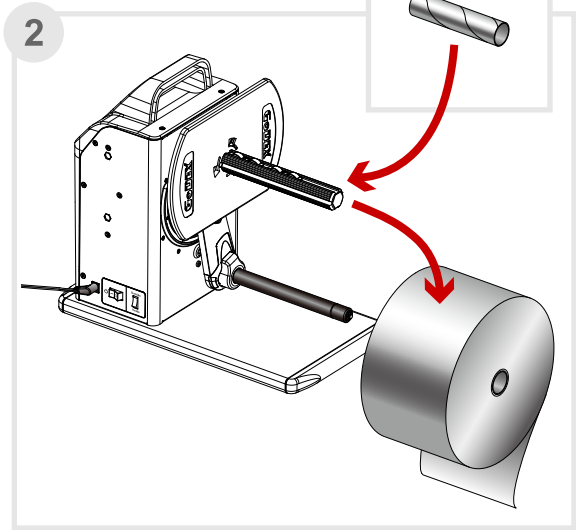
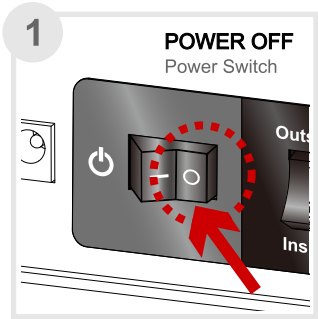
When The Rewinder Is Full



Pink

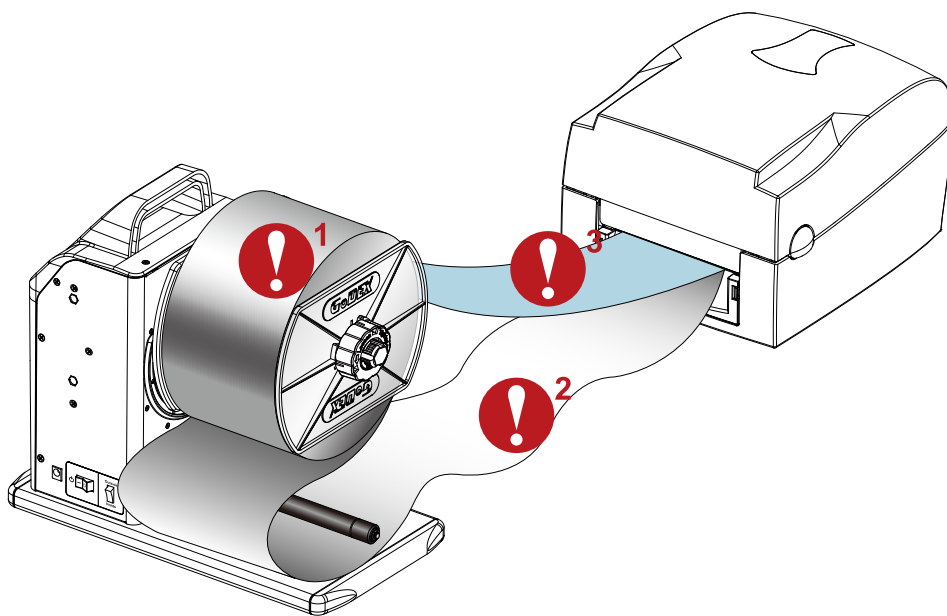


Pink



5 TROUBLESHOOTING

Error / Alert



Error /Alert

Description



Paper Full

refer to "When The Rewinder Is Full" on Chapter 4



Sensing Error

refer to "Sensing Error" on Chapter 5

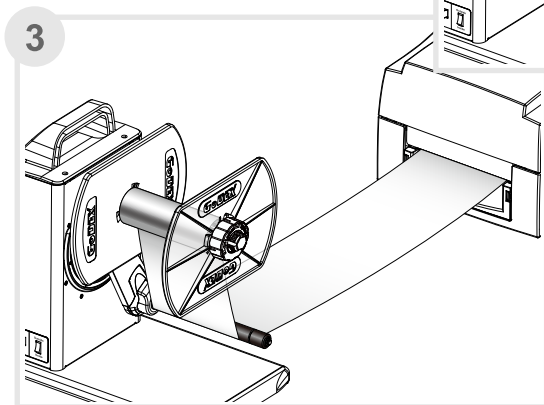
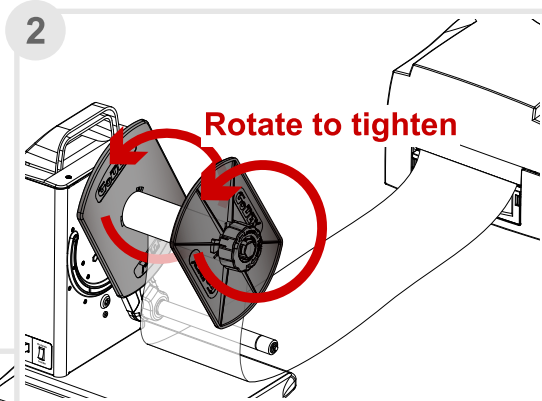
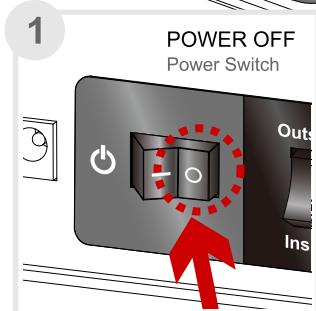
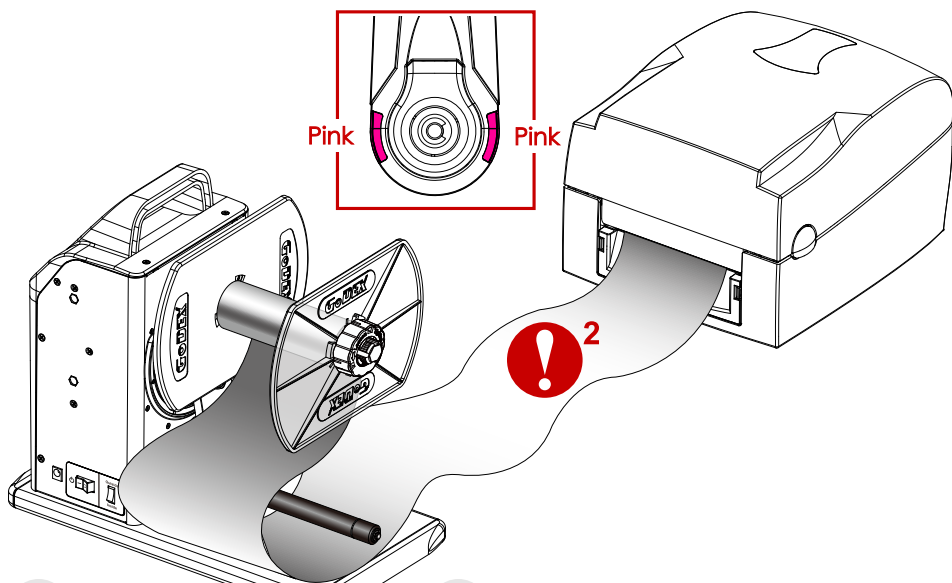


Idle Load

refer to "Idle Load" on Chapter 5

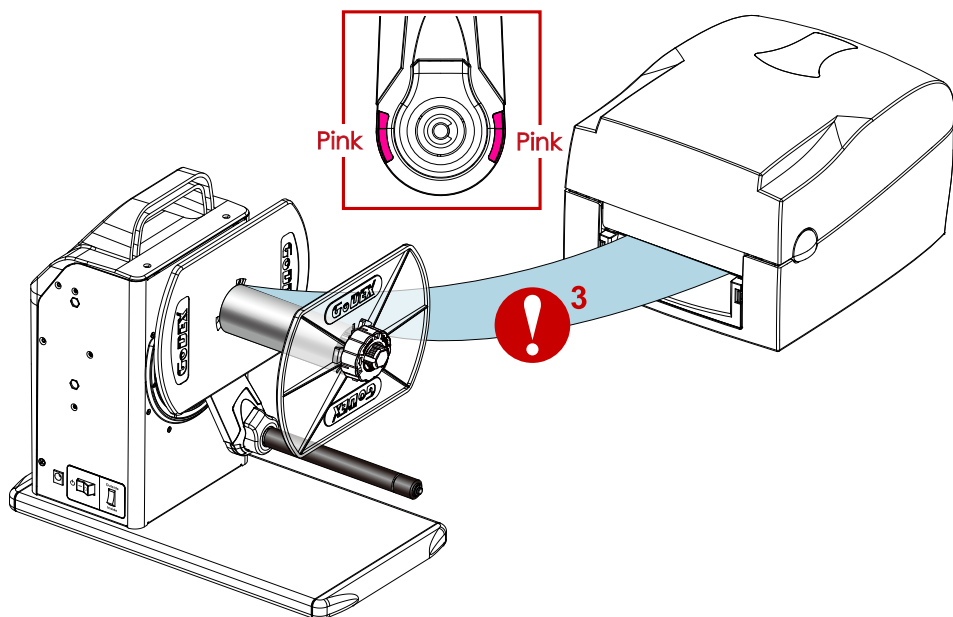


Sensing Error



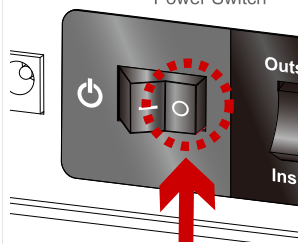


Idle Load

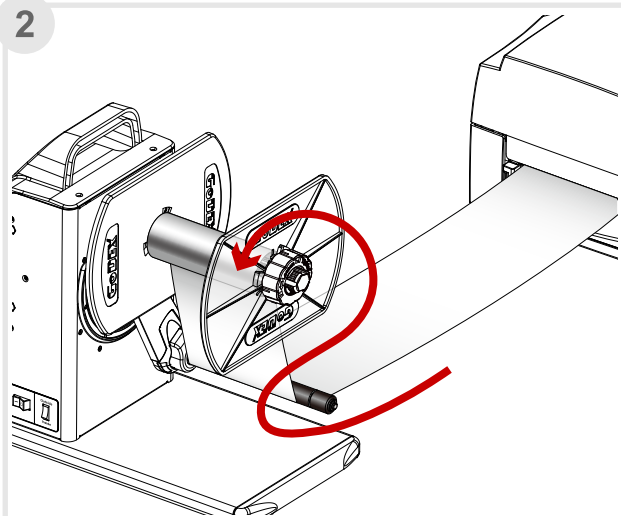


1

POWER OFF
Power Switch

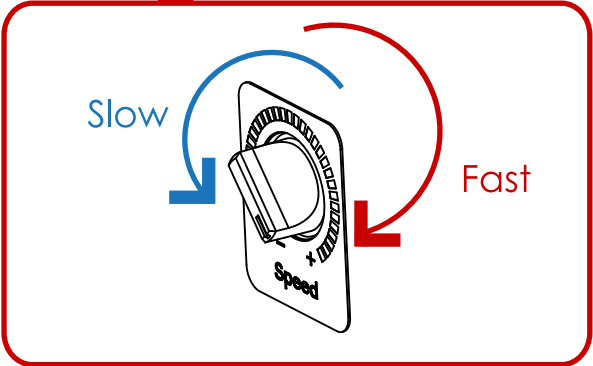
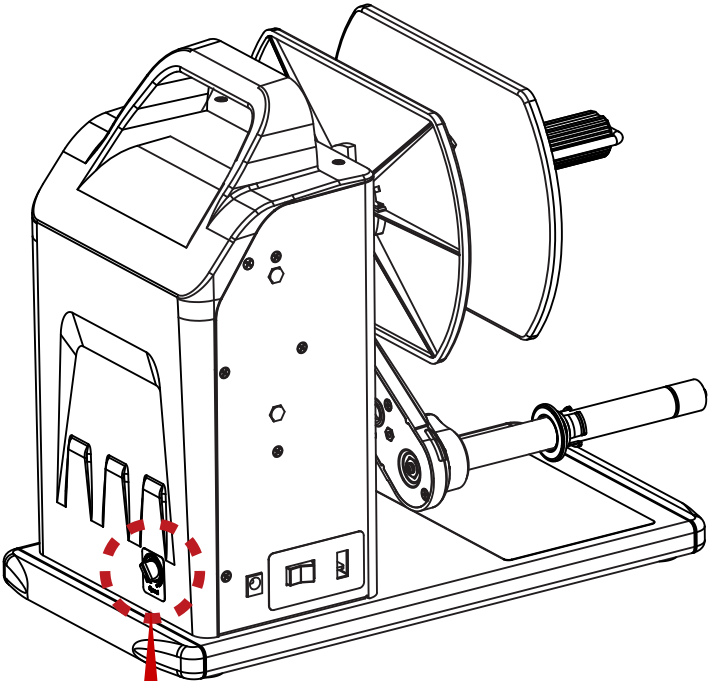


2



T-10/T-20 USER GUIDE

VR(Speed Adjustment)



APPENDIX

PRODUCT SPECIFICATIONS

Model		T10 Label Rewinder
Paper width		4.72" (Max)
Rewind Speed		Auto mode : 14 IPS (MAX) Fixed : 2~15 IPS
Label Roll		8" (Max.)
Core Roll		Coreless 1" (25.2 to 25.6 mm) 1.5" (37.4 to 38 mm) 1.5" (40 to 40.6 mm) 3" (76 to 76.6 mm)
Label Roll Weight		5 Kg
Rewinding		Label Inside/Outside
Switches		Rewind
Motor		Hybrid Motor
Power		100~240VAC 24W, 24V Adapter
Environment	Operating Temp.	41°F to 104°F (5°C to 40°C)
	Storage Temp.	-4°F to 122°F (-20°C to 60°C)
Humidity		10-85% (non-condensing RH)
Size(H*W*D)		303 mm x 180 mm x 349 mm
Agency Approvals		CE, FCC Class A
Weight		5 Kg (11 lb)

* We do not recommend to rewind die-cut labels. Labels might be torn under certain circumstances.

APPENDIX

PRODUCT SPECIFICATIONS

Model		T20 Label Rewinder
Paper width		7" (Max.)
Rewind Speed		Auto mode : 14 IPS (max) Fixed : 2~15 IPS
Label Roll		6" (Max.)
Core Roll		Coreless 1" (25.2 to 25.6 mm) 1.5" (37.4 to 38 mm) 1.5" (40 to 40.6 mm) 3" (76 to 76.6 mm)
Label Roll Weight		5 Kg
Rewinding		Label Inside/Outside
Switches		Rewind
Motor		Hybrid Motor
Power		100~240VAC 24W, 24V Adapter
Environment	Operating Temp.	41°F to 104°F (5°C to 40°C)
	Storage Temp.	-4°F to 122°F (-20°C to 60°C)
Humidity		10-85% (non-condensing RH)
Size(H*W*D)		303 mm x 180 mm x 394 mm
Agency Approvals		CE, FCC Class A
Weight		5 Kg (11 lb)

* We do not recommend to rewind die-cut labels. Labels might be torn under certain circumstances.



www.godexintl.com



Barcodes Made Easy

Godex International (Headquarters)

13F, No.168, Jian-Kang Road
Zhonghe Dist, New Taipei City 235 TAIWAN
Telephone: +886 2 2225 8580
Fax: +886 2 2225 8480
Contact us: infoGT@godexintl.com
Technical support: techGT@godexintl.com

Godex Americas

4023 Camino Ranchero Rd., Ste A
Camarillo, CA 93012
Telephone: +1 805 987 5100
Fax: +1 805 987 5115
Contact us: infoGA@godexintl.com
Technical support: techsupportGA@godexintl.com

Godex China

3F, NO.303 Jiang Chang 3 Road Shanghai, China
Telephone: +86 21 5665 1313
Fax: +86 21 5665 7455
Contact us: shanghai@godexintl.com
Technical support: support@godexintl.com

Godex Europe

Arnzhauschen 36 D-42929
Wermelskirchen, Germany
Telephone: +49 2193 53396 0
Fax: +49 2193 53396 69
Contact us: infoGE@godexintl.com
Technical support: technikGE@godexintl.com